



CHAPTER ADVISOR GUIDE



INTRODUCTION

This guide was developed for the educator interested in starting a TSA chapter, as well as the new TSA chapter advisor, and the veteran TSA chapter advisor who has served for multiple years.

The material covered presents both general and specific information about the organization – including details for starting a chapter and advisor resources that focus on TSA competitions, programs, and initiatives.

For questions about the guide, please contact National TSA at general@tsaweb.org.



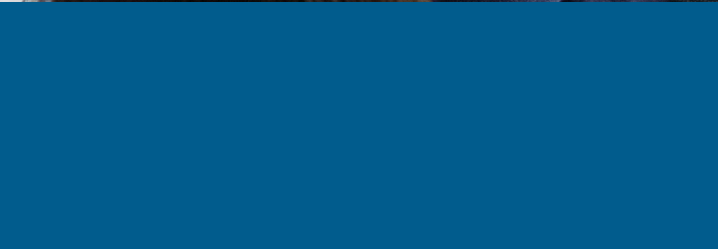
TABLE OF CONTENTS

INTRODUCTION	2
ABOUT TSA	4
AFFILIATION AND MEMBERSHIP	7
State and National TSA	8
Affiliation and Dues.....	9
How to Affiliate a Chapter	10
Champion Fund	11
TSA Bylaws.....	12
Resources Available to Chapter Advisors	13
COMPETITIONS AND PROGRAMS	15
High School and Middle School TSA Competitive Events.....	16
Sample TSA Competitions	17
National TSA Conference Dress Code	18
Tests of Engineering Aptitude, Mathematics, and Science (TEAMS).....	19
TSA Achievement Program, Pathways to Excellence.....	20
Leadership	21
NTHS.....	22
NATIONAL TSA OFFICERS, BOARD OF DIRECTORS, NATIONAL TSA STAFF	23
2025 NATIONAL TSA CONFERENCE	24

ABOUT TSA

The Technology Student Association (TSA) is a national non-profit career and technical student organization (CTSO) of middle and high school students engaged in science, technology, engineering, and mathematics (STEM). TSA was chartered in 1978, and since then over 5,000,000 students have participated in TSA's competitions, intracurricular activities, leadership opportunities, community service, and more.





MISSION

The Technology Student Association (TSA) enhances personal development, leadership, and career opportunities in science, technology, engineering, and math (STEM), whereby members apply and integrate these concepts through intracurricular activities, competitions, and related programs.

MEMBERSHIP BY THE NUMBERS

300,000+

MIDDLE AND HIGH SCHOOL STUDENT MEMBERS

100% 

LIKELY TO GRADUATE FROM HIGH SCHOOL



90%

COLLEGE-BOUND



40%

MINORITY REPRESENTATION



3,500+

TEACHERS (CHAPTER ADVISORS)

2,300+

SCHOOLS IN 48 STATES



CTE® 85%

ENROLLED IN A CTE PROGRAM



53%

RECEIVE FREE AND REDUCED LUNCH

STUDENT MEMBERS

Open to students enrolled in or who have completed technology and engineering courses in school, TSA includes more than 300,000 middle and high school student members across the United States. TSA is supported by educators, parents, and business leaders who believe in the need for a technologically literate society. Members apply and integrate STEM concepts through participation in competitive events, leadership endeavors, co-curricular activities, and related programs. A wide range of opportunities makes TSA a positive experience for every student.

AFFILIATED CHAPTERS

A Technology Student Association (TSA) chapter – which affiliates on the state and national level – is an organized middle school or high school group comprised of students interested in science, technology, engineering, and mathematics (STEM). Members must be enrolled in or have taken a technology-related course in school, and an advisor (teacher or administrator) must guide the chapter. Membership in TSA provides an opportunity for students to compete in STEM competitions at the local, state, and national level; participate in leadership and community-oriented activities and programs; and earn recognition for their achievements.

To learn more about TSA, view the video below.



AFFILIATION AND MEMBERSHIP

Chapter members are part of both their state TSA delegation and national TSA.



STATE AND NATIONAL TSA

In addition to the opportunities and resources offered through national TSA, many state TSA organizations offer a leadership conference in the fall, a competition conference in the spring, and other activities during the year. Members are encouraged to attend and participate in the annual national TSA conference. Chapter advisors should be sure to check their state TSA website for information and contact their state advisor to learn how they can be involved.

ALABAMA

ALASKA

ARIZONA

ARKANSAS

CALIFORNIA

COLORADO

CONNECTICUT

DELAWARE

DISTRICT OF COLUMBIA

FLORIDA

GEORGIA

IDAHO

ILLINOIS

INDIANA

IOWA

KANSAS

KENTUCKY

LOUISIANA

MAINE

MARYLAND

MASSACHUSETTS

MICHIGAN

MINNESOTA

MISSISSIPPI

MISSOURI

MONTANA

NEBRASKA

NEVADA

NEW HAMPSHIRE

NEW JERSEY

NEW MEXICO

NEW YORK

NORTH CAROLINA

NORTH DAKOTA

OHIO

OKLAHOMA

OREGON

PENNSYLVANIA

RHODE ISLAND

SOUTH CAROLINA

SOUTH DAKOTA

TENNESSEE

TEXAS

UTAH

VERMONT

VIRGINIA

WASHINGTON

WEST VIRGINIA

WYOMING

AFFILIATION AND DUES

TSA Chapter Affiliation

TSA's membership is comprised of middle and high school students engaged in STEM across the country. Members are part of an affiliated TSA chapter with an advisor – a teacher or other faculty member at a school.

TSA affiliation is paid for annually. Membership status begins when a chapter completes affiliation and ends at the conclusion of the national TSA conference. TSA offers three curriculum-integrated membership programs. Chapters should select the program that works best for them:

RED CAP

Red Chapter Affiliation Program

A chapter affiliates up to 10 members by paying a flat fee (members may be added during the year for an additional fee). The membership fee for Red CAP is \$120 at the national level, plus state dues.



WHITE CAP

White Chapter Affiliation Program

A chapter affiliates 11 or more members by paying a per member fee for state and national dues. The membership fee for White CAP is \$12 per member at the national level, plus state dues.



BLUE CAP

Blue Chapter Affiliation Program

A chapter affiliates an unlimited number of members in a school for a flat fee. This option is popular among chapters in which students rotate through a STEM class for a portion of the year because it enables all students to be members. The membership fee for Blue CAP is \$400 at the national level, plus state dues.



A chapter's affiliation selection must be the same at the state and national level. View the list of [state dues](#). View additional important [Member Affiliation Policies](#).

HOW TO AFFILIATE A CHAPTER

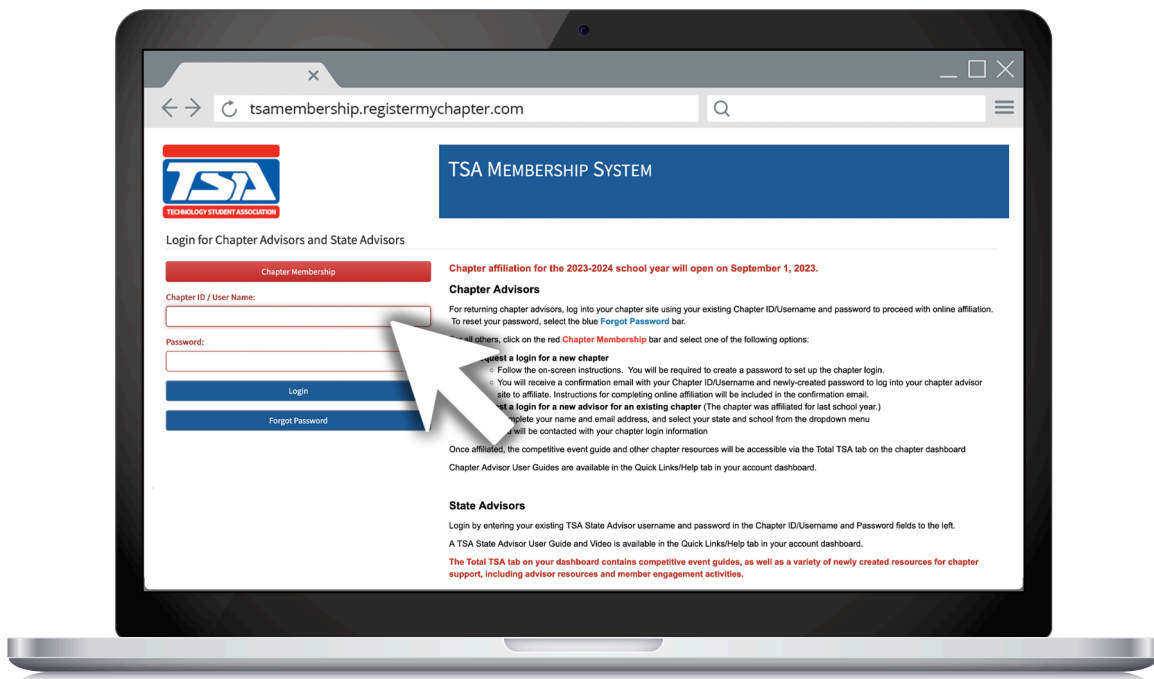
Returning TSA chapters: From the Advisor Login tab on the TSA website, previous-year chapter advisors may log in to their chapter site in the TSA Membership System using their existing chapter ID/username and password – and then proceed to online affiliation.

New TSA chapters: From the Advisor Login tab on the TSA website, there are two options for individuals who wish to affiliate a chapter with TSA: starting a new chapter, or re-affiliating a previous chapter under a new advisor. For either option, the steps to complete affiliation begin by clicking on the red Chapter Membership bar and following the onscreen instructions.

Payment: Chapter affiliation payment by credit card results in immediate activation of membership and access to TSA chapter resources. Payment by P.O. must be verified by TSA before membership in TSA is activated and resources become available.

Once membership is activated, returning and new chapter advisors have access to full TSA competitive event guidelines (for the middle school level or high school level, as appropriate), leadership materials, and chapter and career-oriented information and resources.

For questions or additional support, email register@tsaweb.org.



TSA CHAMPION FUND

When payment for TSA membership poses a challenge, the Champion Fund may provide an opportunity to bring TSA to middle schools and high schools. Through the Champion Fund, Red CAP membership costs (up to 10 members and one advisor) for approved schools are covered for one school year. Newly affiliated chapters can discover all that TSA membership has to offer, including a wide range of challenging STEM-related competitions, as well as education, leadership, and career resources.



A school may be eligible if the school:

1. has never had a TSA chapter and there is no school or community financial support available to pay membership costs
2. has not had a TSA chapter for at least three years and there is no school or community financial support available to pay membership costs
3. has had a TSA chapter within the last three years, but currently is experiencing economic hardship because of a disaster.

Submitted applications are reviewed by a committee to determine eligibility and are processed on a first-come, first-served basis depending upon available funding. All applications require a principal's signature. Schools that receive financial support from the TSA Champion Fund are kept anonymous.

Download the [TSA Champion Fund application](#).



TSA BYLAWS

The TSA Bylaws document provides information on such topics as the TSA name, purpose, membership in TSA, chapter voting, chapter meetings, and chapter officers and their duties. This document may be accessed in the password-protected TSA Membership System once affiliation is complete.

TSA Bylaws



ARTICLE I. NAME

SECTION 1

The official name of this organization shall be the Technology Student Association and may be referred to as "TSA."

ARTICLE II. PURPOSES

SECTION 1

The general purposes of this organization are to:

- assist state delegations in the growth and development of TSA.
- assist state delegations in the development and leadership in social, economic, educational and community activities.
- increase the knowledge and understanding of our technological world.
- assist technology education students in the making of informed and meaningful career goals.

SECTION 2

The specific purposes of this organization are to:

- develop, through individual and team work, the ability of members to plan, organize, and use a variety of resources to solve problems.
- explore technology and develop an understanding of technological literacy.
- promote high standards of learning through curricular resource activities.
- encourage students in expressing creativity.
- develop consumer awareness.
- provide career opportunity information pertaining to a broad range of occupations, including training requisites, working conditions, salaries or wages, and other relevant information.
- provide exploratory experiences in classrooms and laboratories and develop partnerships in business or industry to acquaint students with career opportunities.
- assist in providing guidance and counseling for students enrolled in technology education programs in making informed and meaningful career choices.
- expose students to the responsibility of representing a large membership.

- instill desirable work habits and attitudes toward the positive way of life in students and foster a deep respect for the dignity of work.
- prepare individuals for enrollment in advanced or highly skilled vocational and technical education programs.

ARTICLE III. MEMBERSHIP & ORGANIZATION

SECTION 1

The Technology Student Association is an organization of state delegations each operating in accordance with a charter granted by TSA, Inc.

SECTION 2

Each chartered delegation of TSA, Inc., will be responsible for all operational activities within that state or geographic unit under the direction of the State Supervisor of Technology Education or an appointed representative.

SECTION 3

Membership in TSA shall be through chartered state delegations. A delegation will consist of TSA chapters within a state, territory, or equivalent geographic unit. Each chapter will consist of individual members as described below:

- **Active.** Active members shall be students who are presently enrolled in or have been previously enrolled in technology education programs. An active member shall pay dues as established by the TSA, Inc., Board of Directors, and may be declared eligible to hold a national office, to participate in national competitive events or projects, to serve as a national voting delegate, or to otherwise represent their delegations in National TSA affairs as may be approved by their delegations.
- **Associate.** Associate members shall be students who are enrolled in related fields of instruction with emphasis in technology education or who have been previously enrolled in technology education programs. An associate member shall pay dues as established by the TSA, Inc., Board of Directors. Associate members shall not vote or hold office.

RESOURCES AVAILABLE TO CHAPTER ADVISORS

Once affiliation is completed, chapter advisors have full access to TSA competitive event guidelines (for the middle school level or high school level, as appropriate) through the password-protected TSA Membership System. The following are examples of additional resources/informational items available with affiliation:

- 10 Ways to Fundraise
- Advisor Appreciation Week
- Chapter Meeting Agenda – Example
- Competition Tips
- Creating a Program of Work – Sample
- Creating a Program of Work – Template
- Discovering TSA Competitive Events Activity
- Dress Code
- Electing Chapter Officers
- Interview Tips
- Membership Affiliation Policies
- National TSA Week
- Recruiting and Retaining Chapter Members
- Service Project – American Cancer Society
- TSA Chapter Bylaws Template
- TSA Fact Sheet
- TSA Social Media Best Practices
- TSA Bylaws

Competition Tips for Students

- Read the rules... ALL the rules.
 - Begin with the **General Rules** in the front section of the **Competitive Events Guide**. The general rules apply to all middle and high school competitions. They establish specific norms, such as no personal/school identification on competition entries.
 - Next, carefully review the **specific rules for the competitive event** you wish to enter. If you have questions about any rules or regulations, ask your chapter advisor for clarification.
- When planning your entry, remember that it is important to follow a research-based approach. In other words, let the research drive the solution and not the other way around.
- As you develop your entry, use the rules for your event as a checklist, marking each task as it is completed.
- If the event you are competing in has an annual theme, make sure to check the **National TSA website** ("Themes & Problems") to obtain the theme or problem for the current school year.
- Remember, the rules of the events are not suggestions, they are requirements. If the portfolio calls for one page of research, don't produce two pages. This is a rules violation.

Check the **National TSA website** ("Competition Updates") multiple times during your preparation process for updated information about TSA general rules and competitive event guidelines.

Make sure all required forms are included and signed by your chapter advisor. Many research based events will require a Copyright Checklist and/or a Plan of Work Log. Requirements such as these will be listed as part of the rules for the competitive event. Forms must be signed by a chapter advisor and must be present at the time of entry submission.

For all competitive events that require a portfolio and/or documentation, references must follow an approved citation style.

Make sure you are aware of and comply with the required dress code for your competitive event. Dress code requirements are identified at the beginning of each competitive event, and a detailed explanation of dress code guidelines can be found in the front section of the Competitive Events Guide.

10 WAYS to Fundraise

Chapter Fundraisers

- STEM Camp**—With the help of your chapter advisor, plan and host a STEM camp day, and teach classes to local elementary/middle schools with your chapter members. Sell concession snacks such as chips and candy. Consider charging a fee to attend the camp.
- Movie Night**—With the help of your chapter advisor, hold a movie night and sell concessions such as popcorn, candy, and soft drinks, which all money raised can be donated to the American Cancer Society. Perhaps show a STEM movie approved by your administration, such as:
 - A Beautiful Mind (PG-13)
 - Apollo 13 (PG)
 - Gravity (PG-13)
 - Hidden Figures (PG)
 - Interstellar (PG-13)
 - Moneyball (PG-13)
 - October Sky (PG)
 - The Right Stuff (PG)
 - WALL-E (G)
- Partner with Local Businesses**—Work with your chapter advisor to partner with a local business to host a restaurant night with proceeds going to your chapter, or collaborate with multiple local businesses to sell discount cards.
- School Wide Tournaments**—With approval from your school administration, plan and host a tournament open to your whole school. This tournament can revolve around sports, video game competitions, or even a talent show. Integrating a concession stand into this event is a great way to collect additional funds.
- Walking Marathon**—Work with your chapter advisor and ifly officials to host a walk to raise money by walking on a predetermined safe course. Consider selling concessions and refreshments along the path of the walking marathon.

(All of these are state and chapter approved.)

State Conference Fundraisers

- Printing/Charging Station**—Have a printing station at your state conference. Charge a small fee for use or encourage donations.
- Gaming Tournament**—Chapter advisors set up a gaming multiple games which game the tournament. Of the tournament winner. You can charge a fee.
- Breakfast/Bruff**—snack table for enjoy. Serve to, parties, and ju entrance fee.
- Special Event**—and host a sale at your state or for your meeting.
- Carnival**—With and host a carn attend. State of and entertain.

Best Practices for Social Media

When creating social media posts that reference TSA, these tips may be helpful:

- Develop posts that highlight chapter activities.
- Repost from the national TSA feed about national TSA-sponsored events, such as TSA Advisor Appreciation Week and National TSA Week.
- Use countdown posts to remind members of important TSA dates, such as meeting and conference dates.
- Use #nationalTSA on posts.

General social media tips that can be applied to TSA-referenced posts include:

- Provide short and straightforward wording/captions on graphics.
- Diversify a feed by creating a variety of posts, such as videos, Instagram Stories, and multi-graphics.
- Create a social media calendar to plan posts for the year.
- For posts with photographs, ensure appropriate lighting.

IMPORTANT DATES

2024

August 15
2024-2025 Chapter Affiliation Opens

September 3
2025 TEAMS Registration Opens

September 14
National TSA's 46th Anniversary

October 7-11
National TSA Week

November 8
National STEM Day

December 4-7
ACTE's Career Tech VISION

December 6-12
Computer Science Education Week

December 10
Priority Membership due to National TSA

2025

January 15 – February 17
State Level TEAMS Competitions

February 1 – 28
Career and Technical Education Month

April 2-5
2025 ITEEA Conference

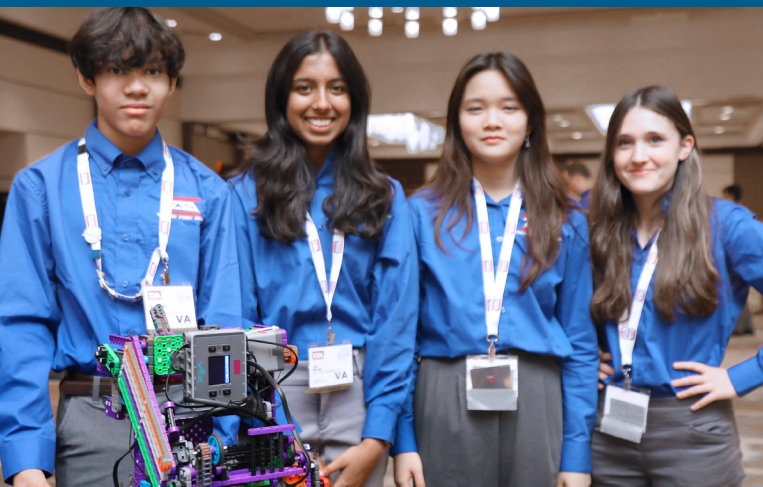
April 24-30
National Student Leadership Week

June 27 – July 1
2025 National TSA Conference



COMPETITIONS AND PROGRAMS

TSA's competitive event guidelines apply to competition at the annual national TSA conference. In addition, they may be used for local, state, and regional TSA conferences.



HIGH SCHOOL TSA COMPETITIVE EVENTS



TSA high school competitive events fall into career categories; the number of competitions for each category is shown in parentheses.



- Architecture and Construction Technology (5)
- Communications Technology (5)
- Computer Science and Information Technology (7)
- Leadership (5)
- Manufacturing and Transportation Technology (7)
- STEM (General) (3)
- STEM and the Arts (7)
- Technology and Research (3)

View an overview of [TSA high school competitions](#).

MIDDLE SCHOOL TSA COMPETITIVE EVENTS



TSA middle school competitive events fall into career categories; the number of competitions for each category is shown in parentheses.



- Architecture and Construction Technology (3)
- Communications Technology (6)
- Computer Science and Information Technology (5)
- Leadership (5)
- Manufacturing and Transportation Technology (5)
- STEM (General) (6)
- STEM and the Arts (2)
- Technology and Research (4)

View an overview of [TSA middle school competitions](#).

SAMPLE TSA COMPETITIONS

Access sample guidelines to two former, but typical, TSA competitive events below:

- [High School 3D Animation](#)
- [Middle School Catapult Design](#)



NATIONAL TSA CONFERENCE DRESS CODE

The TSA Dress Code notes attire requirements for national TSA conference competitors.



Competition Attire

Shirt: official royal blue TSA shirt

Pants, or at least knee-length Skirt: gray

- *Unacceptable:* jeans; jeggings; leggings; baggy pants; exterior pocket pants; shorts

Shoes: black dress shoes worn with black or dark blue socks, hosiery (optional):

- open-toed shoes or sandals are acceptable
- *Unacceptable:* athletic shoes; flip-flops; military boots; or work boots

Required additional attire for Middle and High School Chapter Team event

Blazer: navy blue with official TSA patch

Tie: official TSA tie (males)

- Females are not penalized for wearing the official TSA tie to Chapter Team or any other competitive event

Above attire may be worn for other competitions if preferred by event participants.

General Session Attire

Shirt: the official TSA shirt (royal blue) is preferred; button-down shirt or a polo/golf shirt

- *Unacceptable:* t-shirts; halter tops; tank tops

Pants, or at least knee-length Dress or Skirt

- *Unacceptable:* jeans; jeggings; leggings; baggy pants; exterior pocket pants; shorts

Optional Blazer: navy blue with official TSA patch

Optional Tie: official TSA tie

Shoes: dress shoes worn with dark socks, hosiery (optional):

- open-toed shoes or sandals are acceptable
- *Unacceptable:* athletic shoes; flip-flops; military boots; or work boots

Casual Attire

Appropriate t-shirts, shorts, or jeans.

Casual attire **may not** be worn at competitions or general sessions.

TESTS OF ENGINEERING APTITUDE, MATHEMATICS, AND SCIENCE (TEAMS)

TEAMS challenges middle school and high school students to collaboratively solve real-world engineering issues by applying their STEM knowledge in practical and creative ways.

Original academic and innovative concepts are developed for the TEAMS competition based on the National Academy of Engineering Grand Challenges, United Nations Sustainable Development Goals, or other engineering challenges. Undertaking these challenges requires critical job-readiness skills such as collaboration, analytical thinking, and multi-dimensional problem solving.



Owned and administered by TSA, TEAMS is a separate program from TSA. Many TSA members compete in both the TSA and TEAMS competition programs, however membership in TSA is not required for TEAMS competition. A separate registration is needed for TEAMS, and schools with an active TSA chapter receive a 30% discount on the TEAMS registration fee of \$150/team.

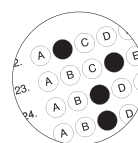
Competing in TEAMS

Teams of two to four students compete during the month of February in three TEAMS competition components:

- **Design/Build** – Teams design and build a solution to an engineering challenge.
- **Multiple Choice** – Teams use math and science skills to solve real-world engineering challenges.
- **Essay** – Teams research and write an in-depth essay that is submitted electronically prior to their competition day.



Design/Build



Multiple Choice



Essay

The national TEAMS competition takes place annually during the national TSA conference. The 2025 TEAMS competition theme is “Engineering for Extreme Weather.”

TSA advisors may register for TEAMS while completing their TSA affiliation (the 30% discount is automatically applied) or by registering on the TEAMS website and using the code **TSA2025** to receive the discount.

Questions? Visit the [TEAMS website](#) for more information or email [Amber Williams](#).



TSA ACHIEVEMENT PROGRAM, PATHWAYS TO EXCELLENCE



The TSA Achievement Program, Pathways to Excellence encourages TSA student members to engage in the areas/categories of service leadership, STEM immersion, and personal/professional development. Students participate in activities in these areas and have the opportunity to earn sequentially a bronze, silver, and gold award at the local, state, and national level, respectively.

Completion of one activity in each area/category – for a total of three completed activities per level – is required for bronze, silver, and gold award eligibility.

Members submit documentation of their activities for each level via the TSA Student Member Site.

Chapter advisors are responsible for verifying the successful completion of a member’s activities for each level.

Bronze awards are typically presented at the chapter or district level during special award assemblies, regional conferences, TSA banquets, etc. Recognition of silver award recipients is managed at the state level, usually at state conferences. Gold award recipients are recognized at the national TSA conference.

Affiliated TSA chapter advisors or student members who seek more detailed information about the TSA Achievement Program, Pathways to Excellence, may visit the [TSA Chapter Advisor Site](#) or the [TSA Student Member Site](#) in the TSA Membership System.



LEADERSHIP

21st Century Skills for TSA is a leadership resource designed to help members develop the skills needed to thrive as an individual and leader. Once a chapter is affiliated, members will have access to leadership resources presented in the TSA Membership System.



NATIONAL TECHNICAL HONOR SOCIETY (NTHS)

Since 1984, the National Technical Honor Society (NTHS) has been the honor society for Career and Technical Education (CTE), serving high schools, career centers, community and technical colleges, and universities. Recognizing over 60,000 new members and awarding nearly \$300,000 in scholarships annually, NTHS exists to advocate for and empower all students to pursue the technical and academic skills needed to build their careers and a skilled global workforce. NTHS achieves this through career development, leadership development, service, and recognition opportunities. The Technology Student Association (TSA) and NTHS have formed a partnership to provide these benefits to TSA members.

Learn more about the National Technical Honor Society at [NTHS.org](https://www.nths.org).



National Technical Honor Society



NATIONAL TSA OFFICERS



TSA, INC. BOARD OF DIRECTORS



NATIONAL TSA STAFF



2025 NATIONAL TSA CONFERENCE

June 27 – July 1, 2025

Gaylord Opryland Resort & Convention Center
Nashville, TN

The Gaylord Opryland Resort & Convention Center offers guests all the excitement and energy of Music City in one convenient location. Located on the banks of the Cumberland River, the resort features an extraordinary selection of dining, shopping, and recreational activities. The world-famous Grand Ole Opry is located next to the hotel, and other attractions including Gaylord Springs® Golf Links golf course, the General Jackson Showboat, and the Wildhorse Saloon are located within minutes of the property.

A world-class, four-diamond hotel, the Gaylord Opryland welcomes back the Technology Student Association for the 2025 National TSA Conference. The Gaylord Opryland features climate-controlled glass atriums with nine acres of lush indoor gardens, multiple restaurants, a full-service luxury spa and salon, and more. The resort is just minutes away from the Nashville International Airport.

The 2025 National TSA Conference will begin Friday, June 27th with conference registration and will close with the exciting awards ceremony on Tuesday, July 1st. In between, TSA members can take advantage of leadership opportunities, participation in competitive events, networking with fellow TSA members, and building memories that will last a lifetime. Start making plans now to visit Nashville, Tennessee, and join the rest of the Technology Student Association to “Tune into Technology.”



Conference Theme

“TUNE INTO TECHNOLOGY”





Technology Student Association

1904 Association Drive • Reston, VA 20191-1540

Phone: 703.860.9000 • Toll Free: 888.860.9010

E-mail: general@tsaweb.org
